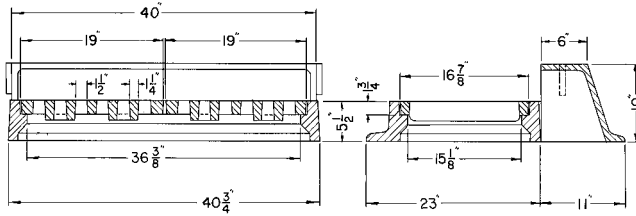


■ Note: When specifying/ordering grates, refer to "Choosing the Proper Inlet Grate" on pages 125-126.
 For a complete listing of FREE OPEN AREAS and WEIR PERIMETERS of all NEENAH grates, refer to pages 327-332.

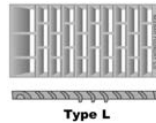
R-3157-A
Combination Inlet Frame, Double Grate, Curb Box

Heavy Duty



Standard Grate (shown): Type K
 Alternate Grate(s):

CATALOG NUMBER	GRATE TYPE	SQ. FT. OPEN	WEIR PERIMETER LINEAL FEET
R-3157-A	K	2.1	6.0
R-3157-A	L	1.2	6.0

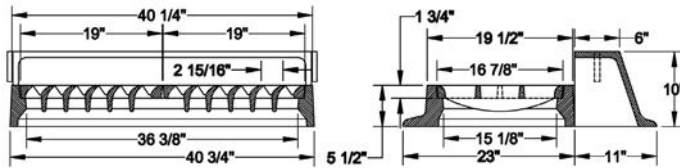


If no curb required, refer to R-3425-A or R-3425-B.

COMBINATION INLETS
3

R-3157-AL
Combination Inlet Frame, Double Grate, Curb Box

Heavy Duty

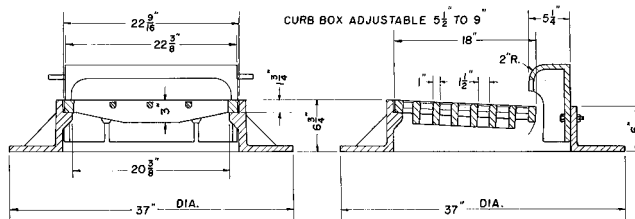


CATALOG NUMBER	GRATE TYPE	SQ. FT. OPEN	WEIR PERIMETER LINEAL FEET
R-3157-AL	L	2.3	6.0

Enviro-Curb Boxes available, see p. 129.

R-3159-A
Combination Inlet Frame, Grate, Curb Box

Heavy Duty



CATALOG NUMBER	GRATE TYPE	SQ. FT. OPEN	WEIR PERIMETER LINEAL FEET
R-3159-A	S	1.3	4.9

Supplied By:



877-903-7246

www.trenchdrainsupply.com

CLICK HERE to return to the Table of Contents

